

# SÜDMO SIGHT GLASSES FOR PENTAIR SÜDMO INLINE-HOUSINGS

## PRODUCT LEAFLET

- FOR INLINE-HOUSING
- FOR INLINE-HOUSING FLANGE

### BENEFITS

- Dead spot free housing without dome and ponds
- Defined deformation of the o-ring through metallic edge
- Seamless gap sealing
- CIP- and SIP-able
- Security against complete breakdown
- Long service life

### TECHNICAL SPECIFICATIONS

#### Material

Ring material 1.4462  
Borosilicate glass acc. to DIN 7080

#### Operating Pressure

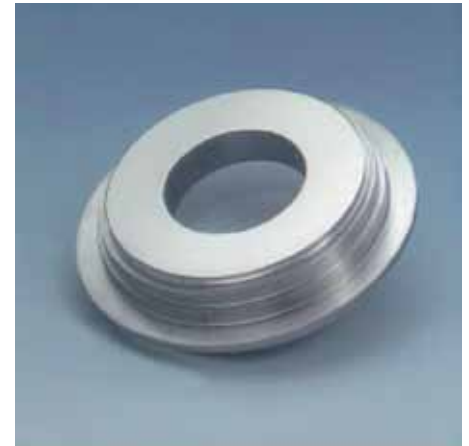
Standard 10 bar (145 psi)

#### Operating Temperatures

-30° Grad to +280° Grad

#### Material Certificates

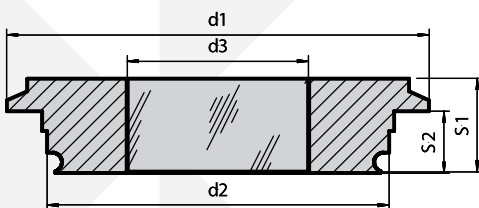
DIN EN 10217-7  
DIN EN 10028-7  
DIN EN 10222-5  
DIN EN 10272  
DIN EN 10088-1  
DIN EN 10088-2  
DIN EN 10088-3  
DIN EN 287-1  
DIN EN ISO 15614-1



Sight Glass for Pentair Südmö Inline-Housing



Pentair Südmö Inline-Housing with Sight Glasses



Process Connections Pentair Südmö Inline-Housings		d1	d2	d3	S1	S2	O-Ring
F	DN 25, DN 1" DN 25-ISO	66	45	25	19	12	42 x3
N	DN 32-ISO 6" IPS	84	68	35	19	12	60 x3
G	DN 100 DN 125	142	117	65	21	14	113 x4

### SÜDMO COMPONENTS GMBH

INDUSTRIESTRASSE 7, 73469 RIESBÜRG, GERMANY WWW.SUEDMO.DE

All Pentair trademarks and logos are owned by Pentair, Inc. All other brand or product names are trademarks or registered marks of their respective owners. Because we are continuously improving our products and services, Pentair reserves the right to change specifications without prior notice.

Pentair is an equal opportunity employer.

INLINE SIGHT GLASSES E-1 /12 © 2012 Pentair, Inc. All Rights Reserved.